



DEPARTMENT OF THE ARMY  
U.S. ARMY CORPS OF ENGINEERS, ST. PAUL DISTRICT  
ST. PAUL DISTRICT OFFICE  
332 MINNESOTA STREET SUITE E1500  
ST. PAUL MINNESOTA 55101

CEMVP-RD

July 9, 2025

MEMORANDUM FOR RECORD

SUBJECT: US Army Corps of Engineers (Corps) Approved Jurisdictional Determination in accordance with the "Revised Definition of 'Waters of the United States'"; (88 FR 3004 (January 18, 2023) as amended by the "Revised Definition of 'Waters of the United States'; Conforming" (8 September 2023),<sup>1</sup> MVP-2025-00618-MWV

BACKGROUND. An Approved Jurisdictional Determination (AJD) is a Corps document stating the presence or absence of waters of the United States on a parcel or a written statement and map identifying the limits of waters of the United States on a parcel. AJDs are clearly designated appealable actions and will include a basis of JD with the document.<sup>2</sup> AJDs are case-specific and are typically made in response to a request. AJDs are valid for a period of five years unless new information warrants revision of the determination before the expiration date or a District Engineer has identified, after public notice and comment, that specific geographic areas with rapidly changing environmental conditions merit re-verification on a more frequent basis.<sup>3</sup>

On January 18, 2023, the Environmental Protection Agency (EPA) and the Department of the Army ("the agencies") published the "Revised Definition of 'Waters of the United States,'" 88 FR 3004 (January 18, 2023) ("2023 Rule"). On September 8, 2023, the agencies published the "Revised Definition of 'Waters of the United States'; Conforming", which amended the 2023 Rule to conform to the 2023 Supreme Court decision in *Sackett v. EPA*, 598 U.S., 143 S. Ct. 1322 (2023) ("*Sackett*").

This Memorandum for Record (MFR) constitutes the basis of jurisdiction for a Corps AJD as defined in 33 CFR §331.2. For the purposes of this AJD, we have relied on Section 10 of the Rivers and Harbors Act of 1899 (RHA),<sup>4</sup> the 2023 Rule as amended, as well as other applicable guidance, relevant case law, and longstanding practice in evaluating jurisdiction.

---

<sup>1</sup> While the Revised Definition of "Waters of the United States"; Conforming had no effect on some categories of waters covered under the CWA, and no effect on any waters covered under RHA, all categories are included in this Memorandum for Record for efficiency.

<sup>2</sup> 33 CFR 331.2.

<sup>3</sup> Regulatory Guidance Letter 05-02.

<sup>4</sup> USACE has authority under both Section 9 and Section 10 of the Rivers and Harbors Act of 1899 but for convenience, in this MFR, jurisdiction under RHA will be referred to as Section 10.

## 1. SUMMARY OF CONCLUSIONS.

- a. Provide a list of each individual feature within the review area and the jurisdictional status of each one (i.e., identify whether each feature is/is not a water of the United States and/or a navigable water of the United States).

Name of Aquatic Resource	JD or Non-JD	Section 404/Section 10
Wetland W1 (1.58 acres)	Non-Jurisdictional	Does not meet (a)(4)
Wetland W2 (0.11 acre)	Non-Jurisdictional	Does not meet (a)(4)
Wetland W3 (2.02 acres)	Non-Jurisdictional	Does not meet (a)(4)

## 2. REFERENCES.

- a. "Revised Definition of 'Waters of the United States,'" 88 FR 3004 (January 18, 2023) ("2023 Rule")
- b. "Revised Definition of 'Waters of the United States'; Conforming" 88 FR 61964 (September 8, 2023))
- c. *Sackett v. EPA*, 598 U.S. 651, 143 S. Ct. 1322 (2023)
- d. "Memorandum To The Field Between The U.S. Department Of The Army, U.S. Army Corps Of Engineers And The U.S. Environmental Protection Agency Concerning The Proper Implementation Of 'Continuous Surface Connection' Under The Definition Of 'Waters Of The United States' Under The Clean Water Act" (March 12, 2025)

## 3. REVIEW AREA. The review area consists of Wetland W1 (1.58 acres), Wetland W2 (0.11 acres), and Wetland W3 (2.02 acres).

- a. Location Description: The project/review area is located in Section 2, Township 4 North, Range 15 East, Walworth County, Wisconsin.
  - b. Center Coordinates of the Project Site (in decimal degrees)  
Latitude: 42.836610 Longitude: -88.682960
  - c. Nearest City or Town: Whitewater
  - d. County: Walworth
  - e. State: Wisconsin
  - f. Other associated Jurisdictional Determinations (including outcomes): N/A
4. NEAREST TRADITIONAL NAVIGABLE WATER (TNW), THE TERRITORIAL SEAS, OR INTERSTATE WATER TO WHICH THE AQUATIC RESOURCE IS CONNECTED. N/A

5. FLOWPATH FROM THE SUBJECT AQUATIC RESOURCES TO A TNW, THE TERRITORIAL SEAS, OR INTERSTATE WATER. N/A
6. SECTION 10 JURISDICTIONAL WATERS<sup>5</sup>: Describe aquatic resources or other features within the review area determined to be jurisdictional in accordance with Section 10 of the Rivers and Harbors Act of 1899. Include the size of each aquatic resource or other feature within the review area and how it was determined to be jurisdictional in accordance with Section 10.<sup>6</sup> N/A
7. SECTION 404 JURISDICTIONAL WATERS: Describe the aquatic resources within the review area that were found to meet the definition of waters of the United States in accordance with the 2023 Rule as amended, consistent with the Supreme Court's decision in *Sackett*. List each aquatic resource separately, by name, consistent with the naming convention used in section 1, above. Include a rationale for each aquatic resource, supporting that the aquatic resource meets the relevant category of "waters of the United States" in the 2023 Rule as amended. The rationale should also include a written description of, or reference to a map in the administrative record that shows, the lateral limits of jurisdiction for each aquatic resource, including how that limit was determined, and incorporate relevant references used. Include the size of each aquatic resource in acres or linear feet and attach and reference related figures as needed.
  - a. Traditional Navigable Waters (TNWs) (a)(1)(i): N/A
  - b. The Territorial Seas (a)(1)(ii): N/A
  - c. Interstate Waters (a)(1)(iii): N/A
  - d. Impoundments (a)(2): N/A
  - e. Tributaries (a)(3): N/A
  - f. Adjacent Wetlands (a)(4): N/A

---

<sup>5</sup> 33 CFR 329.9(a) A waterbody which was navigable in its natural or improved state, or which was susceptible of reasonable improvement (as discussed in § 329.8(b) of this part) retains its character as "navigable in law" even though it is not presently used for commerce or is presently incapable of such use because of changed conditions or the presence of obstructions.

<sup>6</sup> This MFR is not to be used to make a report of findings to support a determination that the water is a navigable water of the United States. The district must follow the procedures outlined in 33 CFR part 329.14 to make a determination that water is a navigable water of the United States subject to Section 10 of the RHA.

- g. Additional Waters (a)(5): N/A

## 8. NON-JURISDICTIONAL AQUATIC RESOURCES AND FEATURES

- a. Describe aquatic resources and other features within the review area identified in the 2023 Rule as amended as not “waters of the United States” even where they otherwise meet the terms of paragraphs (a)(2) through (5). Include the type of excluded aquatic resource or feature, the size of the aquatic resource or feature within the review area and describe how it was determined to meet one of the exclusions listed in 33 CFR 328.3(b).<sup>7</sup> N/A
- b. Describe aquatic resources and features within the review area that were determined to be non-jurisdictional because they do not meet one or more categories of waters of the United States under the 2023 Rule as amended (e.g., tributaries that are non-relatively permanent waters; non-tidal wetlands that do not have a continuous surface connection to a jurisdictional water).

Wetlands W1 and W3 extend beyond the corridor in the agent completed the wetland delineation. The Corps used desktop resources to review the areas delineated by GEI along with the entire extent of the larger overall wetland complexes for Wetlands W1 and W3. Our determination summarized below is based on the overall review of the larger wetland areas.

Wetlands W1, W2, and W3 are not traditionally navigable waters, territorial seas, or interstate waters and therefore are not (a)(1) waters. Topographic maps, LiDAR imagery, and Google Earth aerial imagery indicate that Wetlands W1, W2, and W3 are depressional wetlands surrounded entirely by upland. These wetlands do not physically abut a relatively permanent paragraph (a)(2) impoundment or a jurisdictional (a)(3) tributary. These wetlands are approximately 0.4 miles west of the closest tributary, labeled as unnamed in the National Hydrography dataset. These wetlands are non-tidal wetlands that do not abut a relatively permanent jurisdictional water and, as such, do not meet the definition of adjacent and cannot be evaluated as an (a)(4) adjacent wetland; therefore, this wetland is not jurisdictional under the 2023 Revised Definition of ‘Waters of the United States’; Conforming” 88 FR 61964 Final Rule.

9. DATA SOURCES. List sources of data/information used in making determination. Include titles and dates of sources used and ensure that information referenced is available in the administrative record.

---

<sup>7</sup> 88 FR 3004 (January 18, 2023)

CEMVP-RD

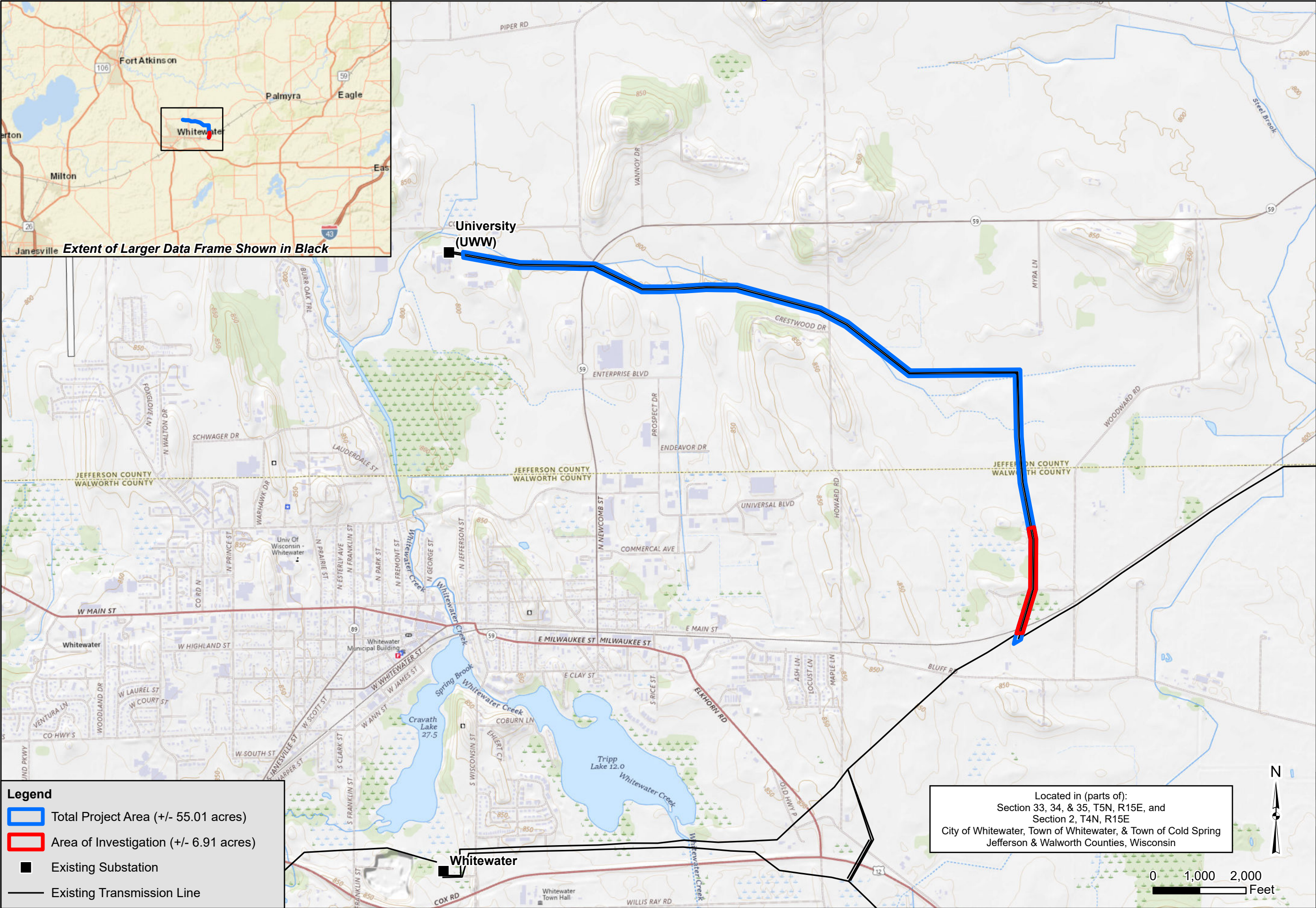
SUBJECT: 2023 Rule, as amended, Approved Jurisdictional Determination in Light of *Sackett v. EPA*, 143 S. Ct. 1322 (2023), MVP-2025-00618-MWV


- a. Wetland Delineation Report UNIG51 and UNIG52 Line Reconductor Project, by GEI Consultants. Dated May 20, 2025.
- b. Google Earth Imagery dated 2006, 2008, 2010, 2011, 2014, 2015, 2017, 2018, 2021, and 2023. Accessed June 17, 2025.
- c. USGS 3DEP Elevation. Accessed June 17, 2025.
- d. USDA NRCS Soil Survey SSURGO and STATGO. Accessed June 17, 2025.
- e. USFWS National Wetland Inventory (MapServer). Accessed June 17, 2025.
- f. USGS TNM – National Hydrography Dataset. Accessed June 17, 2025.

10. OTHER SUPPORTING INFORMATION. N/A

11. NOTE: The structure and format of this MFR were developed in coordination with the EPA and Department of the Army. The MFR's structure and format may be subject to future modification or may be rescinded as needed to implement additional guidance from the agencies; however, the approved jurisdictional determination described herein is a final agency action.







**GEI** Consultants

3159 Voyager Drive  
Green Bay, WI 54311  
www.geiconsultants.com

**FIGURE 1**

**SITE LOCATION AND USGS TOPOGRAPHIC MAP**

ATC

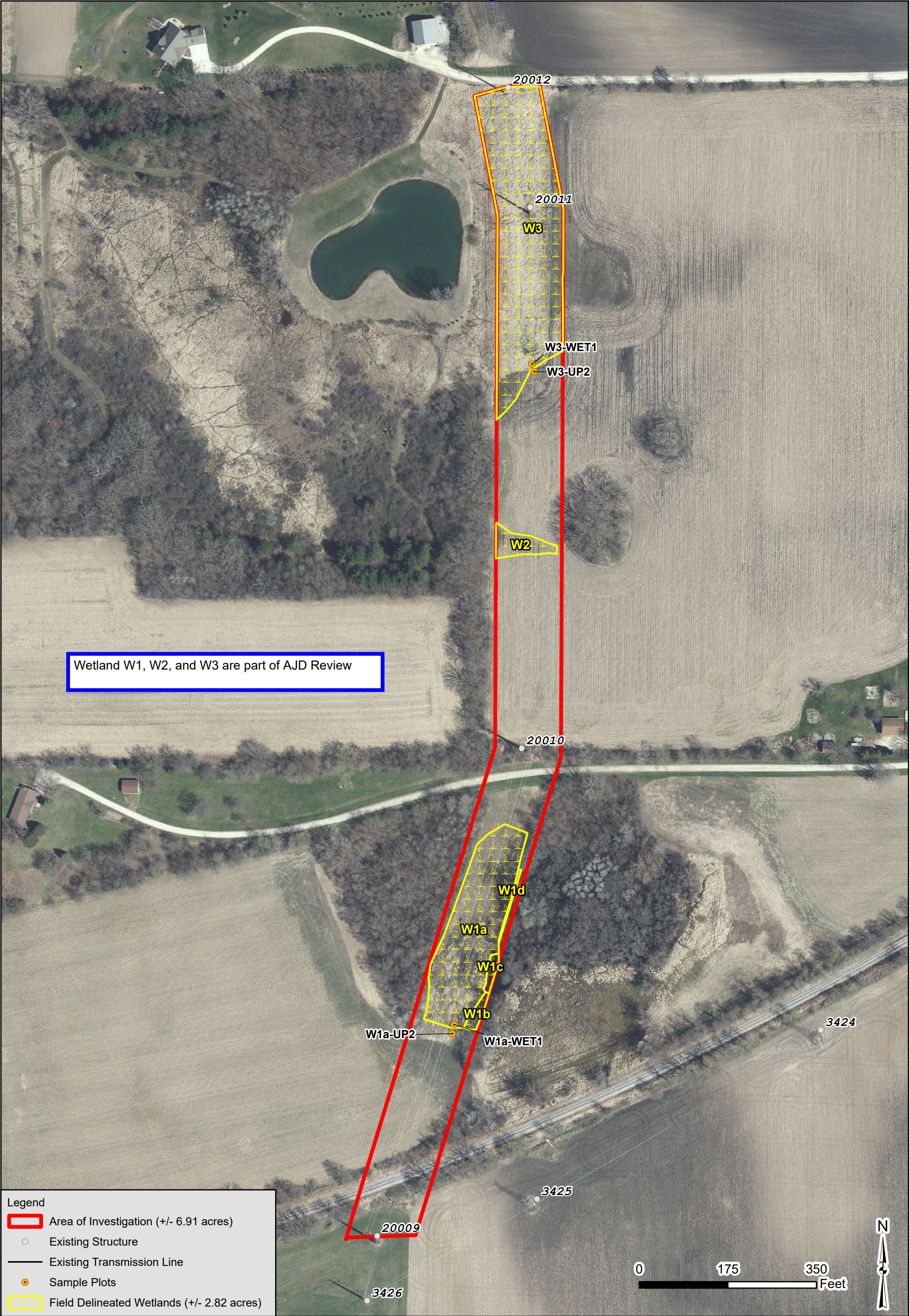
UNIG51 AND UNIG52 LINE RECONDUCTOR PROJECT

CITY OF WHITEWATER, TOWN OF WHITEWATER, & TOWN OF COLD SPRING

JEFFERSON AND WALWORTH COUNTIES, WISCONSIN

Drawn: SLC 5/16/2025
Approved: KJU 5/16/2025
Scale: As Shown
Project Numbers: 2404071 & 2403369
Page 1 of 1





Legend

- Area of Investigation (+/- 6.91 acres)
- Existing Structure
- Existing Transmission Line
- Sample Plots
- Field Delineated Wetlands (+/- 2.82 acres)

GEI



Consultants

3159 Voyager Drive  
Green Bay, WI 54311  
www.geiconsultants.com

FIGURE 5

WETLAND DELINEATION MAP

ATC

UNIG51 AND UNIG52 LINE RECONDUCTOR PROJECT

TOWN OF WHITEWATER

WALWORTH COUNTY, WISCONSIN

Drawn: SLC 5/16/2025
Approved: KJU 5/16/2025
Scale: As Shown
Project Numbers: 2404071 & 2403369
Page 1 of 1